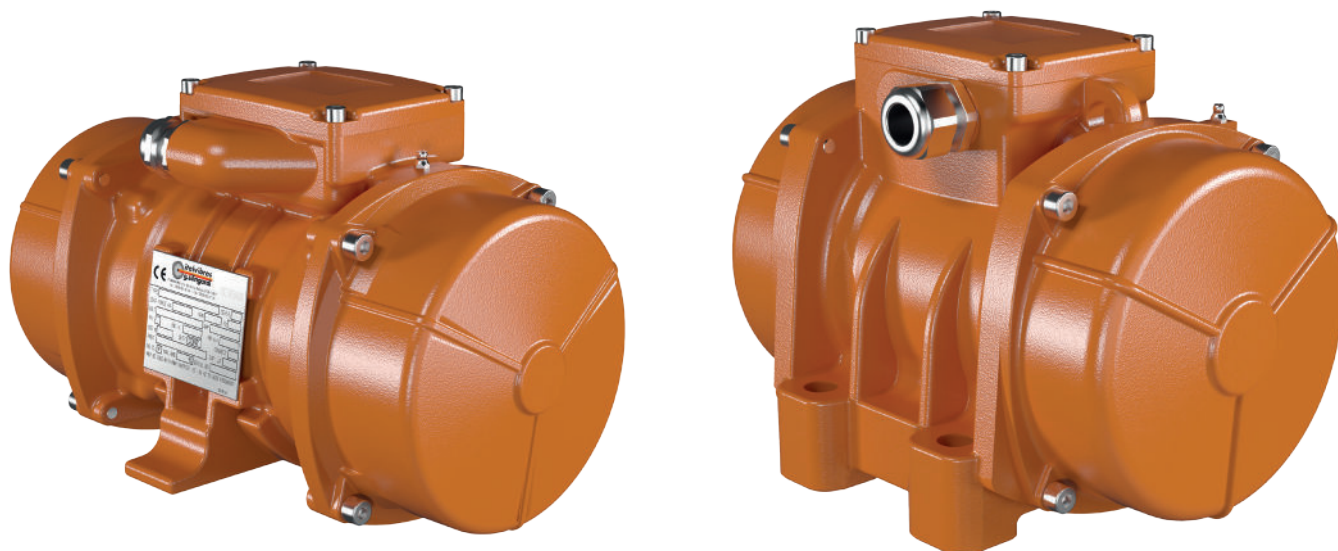


# ConSpare

Make it better.



Brochure

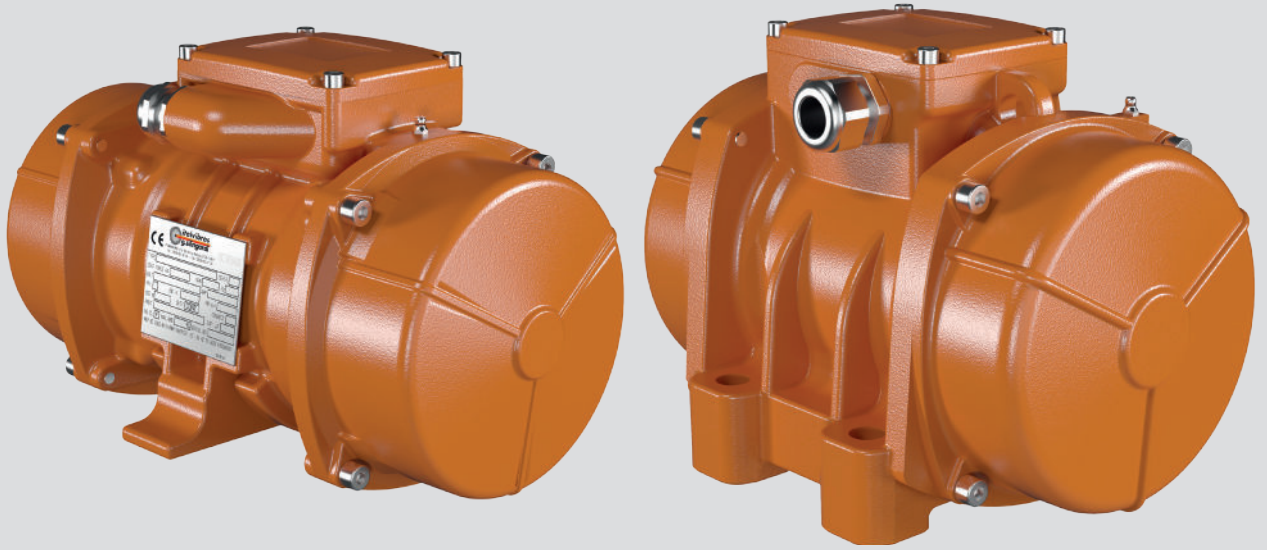
## ITV-VR / ITVAF Electric Vibrator

Visit - [www.conspare.com](http://www.conspare.com) | Call +44 (0)1773 860796 | Email - [sales@conspare.com](mailto:sales@conspare.com)

ConSpare Limited Registered in England No. 10373473  
Castlewood Business Park, Farmwell Lane, Sutton-in-Ashfield, Nottinghamshire. NG17 1BX.  
We reserve the right to modify or withdraw specifications or products without notice or obligation.



# ■ ITV-VR / ITVAF



## Technical features

### Power supply

Three-phase voltage from 24V to 690V at the various frequencies, depending on the type and series. For the power supply of the vibrators it is possible to use electronic frequency drives or electromechanical frequency converters.

### Conformity with Standards and Regulations

Low Voltage Directive 2014/35/UE;  
EN/IEC 60034-1; UL 1004-1, CSA C22.2  
No.100, NEMA MG-1.

### Operation

Continuous service (S1) at the maximum declared centrifugal force and electric power values.

### Centrifugal force

Range extended up to 5300 kgf (52 kN) with force output adjustable by varying weights position.

### Mechanical protection

IP 66 according to IEC/EN 60529.

### Protection against mechanical impacts

IK 08 according to IEC/EN 62262.

### Insulation class

Class F (155°C).

### Tropicalization

Standard on all vibrators, with vacuum encapsulation up to size AF33 and for frame size AF70, with "drop by drop" trickle system for sizes AF50 and AF68. (on request vacuum encapsulated winding may be supplied for these two frame sizes).

### Ambient temperature

To operate correctly, from -20°C to +40°C.

### Vibrator thermal protection

With PTC rated thermistor heat detectors 130°C installed as part of the standard assembly size AF70 onwards.

Also on request thermistors with different temperatures and anti-condensation heaters can be assembled on the lower sizes.

### Fixing of the vibrator

In all positions and therefore without restriction. Two different types of connection are available for the ITV-VR and ITVAF series: fixed connection, where the electric vibrators are connected to the structure by bolts through fixing holes and the RS cradle connection, where the electric vibrators are connected to the structure with the standardized cradle type RS2 except for frame size AF10, for this the cradle fixing is type RS1.

### Lubrication

All the electric vibrators are correctly lubricated in our factory and need no further lubrication at start-up.

### Terminal box

Generously sized to make the electrical connections easier. Special shaped terminals allow to fix the power supply cable.

### Electric motor

Three-phase asynchronous type. Insulated windings using vacuum encapsulating up to size AF33 and for AF70; using the "drop by drop" trickle system with class H resin for frame sizes AF50 and AF68. The rotor is die cast aluminium.

### Casing

In high tensile strength aluminium alloy for frame sizes AF10 and AF33. In spherical cast iron for sizes AF33 (600245), AF50, AF68 and AF70, designed to optimize strength and performance at high speeds.

### Bearings

A special shape, exclusively designed and made for Italvibras and able to bear strong loads at high speeds.

### Motor shaft

in treated steel alloy (isothermic hardening) able to withstand high stress.

### Eccentric weights

Specially shaped lamellar type that can be easily adjusted.

The ITV-VR and ITVAF electric vibrators series are suitable to be applied in plants and machines in the concrete and prefabrication fields, and in all sectors where high speeds are required.

In detail

- ITV-VR variable frequency series: the vibrators are able to supply up to 5300 kgf (52kN) of centrifugal force at frequencies variable from 0 to 6000rpm.
- ITVAF fixed frequency series: fixed frequency vibrators (6000 or 9000 rpm) provide centrifugal force up to 2800 Kgf (27.5 kN).

Both are available with either fixed or cradle connection.

Upon request Italtibras can supply solutions to supply ITVAF and ITV-VR vibrators: frequency drives, control panels, fixed or movable, electromechanical or electronic control panels, manually controlled or via radio control, etc., depending on the needs of the plant.

#### Weight covers

In aluminium alloy except for frame size AF10 where covers are in stainless steel AISI 304.

#### Painting

Electrostatic surface treatment based on polymerised epoxy polyester powder in oven at 200°C. Tested in salt spray for 500 hours.

Upon request Italtibras can supply solutions to supply ITVAF and ITV-VR vibrators: frequency drives, control panels, fixed or movable, electromechanical or electronic control panels, manually controlled or via radio control, etc., depending on the needs of the plant.

**For further details please contact sales offices at Italtibras.**

**The technical data and models listed in this catalogue are not binding. Italtibras reserves the right to modify them without prior notice.**

#### Certifications



Compliance with the applicable European Union directives.



Standard CAN/CSA – C22.2, N°.100-95,  
Certificate n° LR 100948  
Class 4211 01 – Motors and generators  
UL 1004-1 – Rotating Electrical Machines –  
General Requirements



Certification for Eurasian Customs Union  
N° TC N RU Д-IT.АЛ33.В.02527

# ITV-VR / ITVAF



## ITV-VR fixed connection

### Three-phase

DESCRIPTION				MECHANICAL SPECIFICATIONS			ELECTRICAL SPECIFICATIONS					
Code	Type	SIZE		Plage vibrat. (vibr./min)	Centrifugal force		Weight	Max input power		Max. current (A) 100Hz		la/In
					kg	kN	kg	W	42V	400V		
600500	ITV-VR/1210-S08	AF33	•	0-6000	1569	15,4	23	1200	21,0	2,30	4,48	
600247	ITV-VR/2010	AF33	•	0-6000	2000	19,6	27	1700	27,0	2,90	5,00	
600248	ITV-VR/2510	AF50	-	0-6000	2500	24,5	42	2200	35,0	3,90	6,15	
600249	ITV-VR/2510-V*	AF50	-	4500-6000	2500	24,5	42	2200	35,0	3,90	6,15	
600208	ITV-VR/3300*	AF68	-	4500-6000	3300	32,3	74	4000	-	7,20	5,10	
600514	ITV-VR/5000-S02	AF70	-	0-4500	5300	52,0	105	5000	-	8,00	5,30	

## ITV-VR RS cradle connection

Code	Type	SIZE		Plage vibrat. (vibr./min)	Centrifugal force		Weight	Max input power		Max. current (A) 100Hz		la/In
					kg	kN	kg	W	42V	400V		
600508	ITV-VR/1210-RS-S08	AF33	•	0-6000	1569	15,4	21	1200	21	2,3	4,48	
600245	ITV-VR/2010-RS	AF33	•	0-6000	2000	19,6	28	1700	27	2,9	5,00	

\* Special ventilated type for heavy service.

## ITVAF fixed connection

### Three-phase

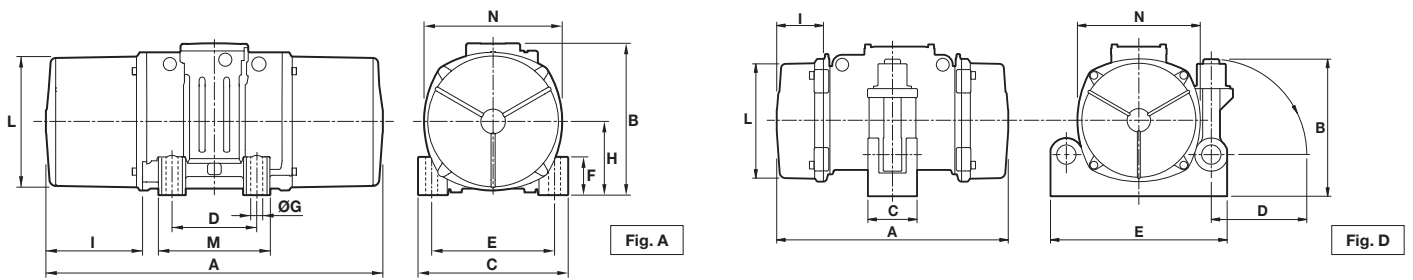
DESCRIPTION				MECHANICAL SPECIFICATIONS			ELECTRICAL SPECIFICATIONS							
Code	Type	SIZE		Plage vibrat. (vibr./min)	Centrifugal force		Weight	Max input power		Max. current (A)			la/In	
					kg	kN	kg	W	200Hz	150Hz	100Hz			
									42V	250V	42V	250V	400V	
603050	ITVAF 6/600-S02	AF10	-	6000	610	5,98	8	500	9,50	1,60	-	-	1,60	4,50
603053	ITVAF 6/1220-S08	AF33	-	6000	1095	10,7	23	1200	23,0	3,85	-	-	3,90	6,04
603054	ITVAF 6/1510-S08	AF33	-	6000	1484	14,6	25	1700	29,0	4,90	-	-	4,80	7,10
603037	ITVAF 6/2010-S90	AF50	-	6000	1978	19,4	41	2000	35,0	5,90	-	-	5,90	8,00
603010	ITVAF 6/3300 o	AF68	-	6000	2800	27,5	74	4000	-	-	-	-	11,0	5,10
604041	ITVAF 9/1110-S08	AF33	-	9000	1230	12,0	22	1150	-	-	18	-	1,85	8,52
604042	ITVAF 9/1510-S08	AF33	-	9000	1484	14,6	24	1600	-	-	24	4,0	2,50	10,40

## ITVAF RS cradle connection

Code	Type	SIZE		Plage vibrat. (vibr./min)	Centrifugal force		Weight	Max input power		Max. current (A)			la/In	
					kg	kN	kg	W	200Hz	150Hz	100Hz			
									42V	250V	42V	250V	400V	
603055	ITVAF 6/1220-RS-S08	AF33	-	6000	1095	10,7	21	1200	23	3,85	-	-	3,9	6,04
603056	ITVAF 6/1510-RS-S08	AF33	-	6000	1484	14,6	23	1700	29	4,90	-	-	4,8	7,10
604043	ITVAF 9/1110-RS-S08	AF33	-	9000	1230	12,0	20	1150	-	-	18	-	1,85	8,52
604044	ITVAF 9/1510-RS-S08	AF33	-	9000	1484	14,6	22	1600	-	-	24	4,0	2,50	10,40

o Only supplied at 250V-100Hz, ventilated type, IP44 protection.

la/In = ratio between start-up current and maximum current.



DIMENSIONAL SPECIFICATIONS (mm)

Type	Fig.	A	B	C	D	E	Holes		F	H	I	L	M	N
							ØG	N°						
ITV-VR/1210-S08	A	289	217	215	100	180	17	4	47	93,5	63	170	145	182
ITV-VR/2010	A	375	217	215	100	180	17	4	47	93,5	106	170	145	182
ITV-VR/2510	A	458	232	230	140	190	17	4	49	104	101,5	183	180	200
ITV-VR/2510-V*	A	467	232	230	140	190	17	4	49	104	106	240	180	248
ITV-VR/3300*	A	528	267	310	155	255	23,5	4	122	115	140	265	215	275
ITV-VR/5000-S02	A	560	290	310	155	255	25	4	90	130	137	238	210	253

Type	Fig.	A	B	C	D	E	Holes		F	H	I	L	M	N
							ØG	N°						
ITV-VR/1210-RS-S08	D	289	189	83	140	240	-	-	-	-	63	170	-	182
ITV-VR/2010-RS	D	355	189	83	140	240	-	-	-	-	81,5	164	-	-

CARATTERISTICHE DIMENSIONALI (mm)

Type	Fig.	A	B	C	D	E	Holes		F	H	I	L	M	N
							ØG	N°						
ITVAF 6/600-S02	A	255	179	152	90	125	13	4	28	73	54	124	128	141
ITVAF 6/1220-S08	A	289	216,5	215	100	180	17	4	47	93,5	63	170	145	182
ITVAF 6/1510-S08	A	375	216,5	215	100	180	17	4	47	93,5	106	170	145	182
ITVAF 6/2010-S90 ◦	A	458	232	230	140	190	17	4	49	104	101,5	183	180	200
ITVAF 6/3300 ◦	A	528	267	310	155	255	23,5	4	122	115	140	265	215	275
ITVAF 9/1110-S08	A	289	216,5	215	100	180	17	4	47	93,5	63	170	145	182
ITVAF 9/1510-S08	A	375	216,5	215	100	180	17	4	47	93,5	106	170	145	182

Type	Fig.	A	B	C	D	E	Holes		F	H	I	L	M	N
							ØG	N°						
ITVAF 6/1220-RS-S08	D	289	189	83	140	240	-	-	-	-	63	170	-	182
ITVAF 6/1510-RS-S08	D	375	189	83	140	240	-	-	-	-	106	170	-	182
ITVAF 9/1110-RS-S08	D	289	189	83	140	240	-	-	-	-	63	170	-	182
ITVAF 9/1510-RS-S08	D	375	189	83	140	240	-	-	-	-	106	170	-	182

# ConSpare

Make it better.