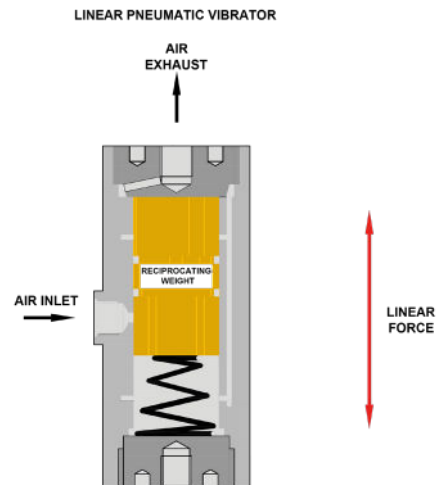


# ConSpare

Make it better.

## DataSheet

# Pneumatic Linear Vibrator - FP



### Models FP12 - FP35

- Linear Vibration
- Aluminium housing surfaced hardened and corrosion resistant
- Ideal for arduous conditions
- Force 34 N to 1066 N
- Frequency and amplitude adjustable independently
- FP12-FP35 Suitable for ambient temperature from 10°C up to 150°C
- FP12-FP LT low temperature and FP HT high temperature models also available
- Stud Fixing

On request can be supplied with ATEX certification to ATEX 2014/34/EU  II 2 G & D Zone 1, 2 & 21, 22

Visit - [www.conspare.com](http://www.conspare.com) | Call +44 (0)1773 860796 | Email - [sales@conspare.com](mailto:sales@conspare.com)

ConSpare Limited Registered in England No. 10373473  
Castlewood Business Park, Farmwell Lane, Sutton-in-Ashfield, Nottinghamshire. NG17 1BX.  
We reserve the right to modify or withdraw specifications or products without notice or obligation.



## PERFORMANCE DATA

Models		Frequency V.P.M.			Linear Force Measured						Air Consumption / Minute						Noise Level	
Standard	2 Bar 29PSI	4 Bar 58PSI	6 Bar 87PSI	2 Bar N	29PSI lbs	4Bar N	58PSI lbs	6Bar N	87PSI lbs	2Bar litr	29PSI CFM	4Bar litr	58PSI CFM	6Bar litr	87PSI CFM	A** dB	A*** dB	
FP-12-S	6200	7800	9300	34	7.7	70	16	92	21	0.8	0.03	7.5	0.26	25	0.88	57-61	N/A	
FP-12-M	5000	6000	6700	34	7.7	58	13	74	17	0.5	0.02	4	0.14	19	0.67	57-61	N/A	
FP-12-L	4000	4800	5400	32	7.2	58	13	81	18	1	0.04	3	0.11	20	0.71	58-60	N/A	
FP-18-S	5000	6400	7700	66	15.0	134	30	187	42	5	0.18	33	1.16	57	2.00	62-71	N/A	
FP-18-M	4000	5000	5900	68	15.0	134	30	188	42	4	0.14	28	1.00	52	1.84	61-67	N/A	
FP-18-L	3100	4000	4600	64	14.0	150	34	206	46	5	0.18	23	0.81	46	1.62	61-68	N/A	
FP-25-S	3600	4300	5500	126	28	270	61	416	94	13	0.46	54	1.91	93	3.28	70-75	61-67	
FP-25-M	3000	3800	4200	142	32	364	82	504	113	23	0.81	50	1.76	87	3.07	73-75	62-66	
FP-25-L	2400	3100	3700	186	42	392	88	594	134	18	0.64	62	2.19	93	3.28	72-75	60-65	
FP-35-S	2800	4700	5800	294	66	668	150	1038	234	23	0.81	101	3.56	162	5.72	72-77	71-73	
FP-35-M	3000	4000	4600	248	56	778	175	1080	243	24	0.84	83	2.93	141	4.98	74-78	70-73	
FP-35-L	2400	3100	3600	282	63	680	153	1066	240	38	1.34	89	3.14	135	4.77	74-78	68-74	

**NOISE LEVEL :NOTE** \*\* With customary silencer \*\*\* With 1/4" Free Flow Silencer

**FREQUENCY AND AMPLITUDE:** By using a flow restricting silencer on the FP, FPLF, FAL, and VTL vibrators the amplitude can be reduced whilst the frequency remains almost constant.

Visit - [www.conspare.com](http://www.conspare.com) | Call +44 (0)1773 860796 | Email - [sales@conspare.com](mailto:sales@conspare.com)

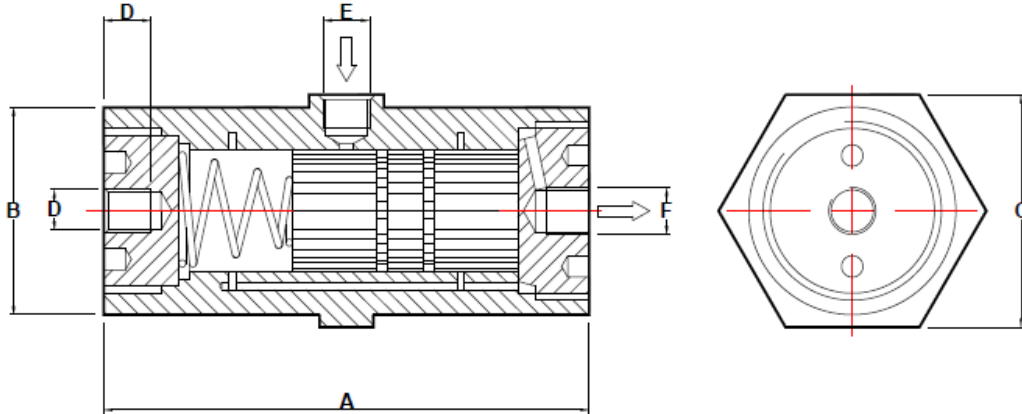
ConSpare Limited Registered in England No. 10373473  
 Castlewood Business Park, Farmwell Lane, Sutton-in-Ashfield, Nottinghamshire. NG17 1BX.  
 We reserve the right to modify or withdraw specifications or products without notice or obligation.



## DIMENSIONS FP12-FP35 Stud Fixing



**Stud Fixing**  
(see dimension D)



Drawing No 081001

Models	A		B		C		D Metric Thread	D Depth Of Thread	BSP Thread			Weight of Body		Weight of Piston		Total Weight	
	mm	inch	mm	inch	mm	inch			E	E1	F	kg	lbs	kg	lbs	kg	lbs
FP-12-S	71	2.80	31	1.22	34	1.34	M8	11mm	1/8"	N/A	1/8"	0.125	0.275	0.020	0.045	0.153	0.320
FP-12-M	81	3.19	31	1.22	34	1.34	M8	11mm	1/8"	N/A	1/8"	0.140	0.309	0.030	0.066	0.178	0.375
FP-12-L	94	3.70	31	1.22	34	1.34	M8	11mm	1/8"	N/A	1/8"	0.165	0.360	0.040	0.090	0.212	0.450
FP-18-S	81	3.19	40	1.57	42	1.65	M10	12mm	1/8"	N/A	1/8"	0.220	0.485	0.060	0.135	0.300	0.620
FP-18-M	94	3.70	40	1.57	42	1.65	M10	12mm	1/8"	N/A	1/8"	0.260	0.575	0.080	0.175	0.352	0.750
FP-18-L	109	4.29	40	1.57	42	1.65	M10	12mm	1/8"	N/A	1/8"	0.300	0.660	0.110	0.240	0.423	0.900
FP-25-S	98	3.86	48	1.89	50	1.97	M12	15mm	1/8"	N/A	1/4"	0.375	0.825	0.155	0.345	0.553	1.170
FP-25-M	116	4.57	48	1.89	50	1.97	M12	15mm	1/8"	N/A	1/4"	0.435	0.955	0.215	0.475	0.672	1.430
FP-25-L	136	5.35	48	1.89	50	1.97	M12	15mm	1/8"	N/A	1/4"	0.500	1.100	0.290	0.640	0.820	1.740
FP-35-S	98	3.86	58	2.28	65	2.55	M12	15mm	1/4"	N/A	1/4"	0.530	1.168	0.315	0.694	0.926	1.862
FP-35-M	116	4.57	58	2.28	65	2.55	M12	15mm	1/4"	N/A	1/4"	0.610	1.344	0.430	0.947	1.135	2.292
FP-35-L	136	5.35	58	2.28	65	2.55	M12	15mm	1/4"	N/A	1/4"	0.700	1.543	0.530	1.278	1.382	2.281

### FP35 with square baseplate

### IMPORTANT

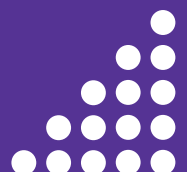


The FP35 range are available with a square baseplate 90 x90 x 20mm thick, with 9mm fixing holes on 72mm centres.

The plate part number 99035.80 is supplied with a 12mm fixing screw to secure the baseplate to the FP Vibrator.

The baseplate is ordered separately to the Vibrator

**It is recommended that a 3/2 Pneumatic Valve is used in installation.** Leaflet L1103 Available on request







## Models FP50 - FP95

- Linear Vibration
- Aluminium housing surfaced hardened and corrosion resistant
- Ideal for arduous conditions
- Force 490 N to 6150 N
- Frequency and amplitude adjustable independently
- FP50-FP95 Suitable for ambient temperature from 10°C up to 120°C
- FP LT low temperature and FP HT high temperature Vibrators are also available
- FP50-FP90 are supplied with square base plates with four fixing holes instead of a single stud



On request can be supplied with ATEX certification to ATEX 2014/34/EU  II 2 G & D Zone 1, 2 & 21, 22

PERFORMANCE DATA																	
FP 50 and 60 are supplied with countersunk screws to blank off ports not used. Supplied as build 1 unless otherwise requested.  FP 95 does not have a top port, supplied as build 4 unless otherwise requested.																	
		Build 1				Build 2				Build 3				Build 4			
Model	Build	Frequency V.P.M.			Linear Force Measured						Air Consumption / Minute						Noise Level dBA
		2 Bar 29PSI	4 Bar 58PSI	6 Bar 87PSI	2 Bar N	29PSI lbs	4Bar N	58PSI lbs	6Bar N	87PSI lbs	2Bar litr	29PSI CFM	4Bar litr	58PSI CFM	6Bar litr	87PSI CFM	
FP-50-M	Build 1	1850	2300	2800	490	110	970	218	1600	360	48	1.67	100	3.48	190	6.61	70-77
FP-60-M	Build 1	1950	2400	2700	610	137	1400	315	2170	489	90	3.13	160	5.57	270	9.39	73-79
FP-50-M	Build 2	1850	2300	2800	470	107	1020	230	1950	438	78	2.75			280	9.89	76-83
FP-60-M	Build 2	1950	2400	2700	670	151	1450	326	2400	540	115	4.06			335	11.83	75-82
FP-50-M	Build 3	1850	2300	2800	460	103	980	220	1850	416	78	2.75			280	9.88	80-87
FP-60-M	Build 3	1950	2400	2700	610	137	1450	326	2200	495	115	4.06			335	11.93	78-84
FP-95-M	Build 3	1800	2400	2800	1500	338	2620	590	4270	962	170	5.91	320	11.13	450	15.65	85-92
FP-50-M	Build 4	1850	2300	2800	450	101	1000	225	1900	427	78	2.75			310	10.95	86-92
FP-60-M	Build 4	1950	2400	2700	630	142	1440	324	2300	517	115	4.06			335	11.83	84-90
FP-95-M	Build 4	1800	2400	2800	1620	364	4060	913	6150	1382	170	5.91			490	17.30	86-93
<b>FREQUENCY AND AMPLITUDE:</b> By using a flow restricting silencer on the FP, FPLF, FAL, and VTL vibrators the amplitude can be reduced whilst the frequency remains almost constant.																	

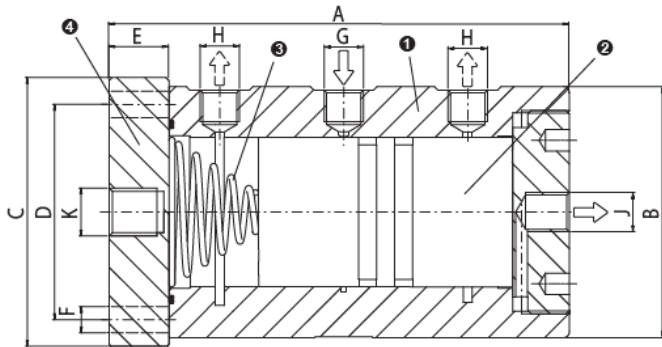
Visit - [www.conspare.com](http://www.conspare.com) | Call +44 (0)1773 860796 | Email - [sales@conspare.com](mailto:sales@conspare.com)

ConSpare Limited Registered in England No. 10373473  
 Castlewood Business Park, Farmwell Lane, Sutton-in-Ashfield, Nottinghamshire. NG17 1BX.  
 We reserve the right to modify or withdraw specifications or products without notice or obligation.



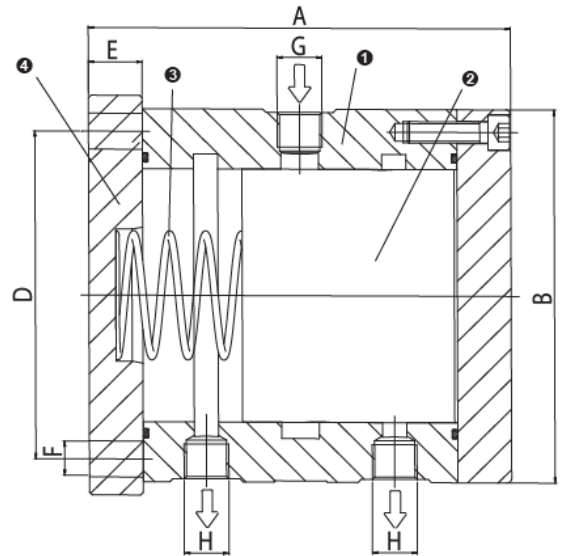
## DIMENSIONS FP50-FP95 with square baseplate

FP-50 und 60



- 1 Housing made from hard anodized aluminium alloy
- 2 Piston made from leaded bronze
- 3 Steel spring
- 4 End Cap made from hard anodized aluminium

FP-95



Models	A		B $\varnothing$		C		D		E		F		BSP Thread			K	
	mm	inch	mm	inch	mm	inch	mm	inch	mm	inch	mm	inch	G	H	J	mm	
Standard																	
FP-50-M	154	6.07	84	3.31	90	3.54	72	2.84	20	0.79	8.8	0.35	1/4"	1/4"	1/4"	M16	
FP-60-M	154	6.07	94	3.70	110	4.33	90	3.54	20	0.79	8.8	0.35	1/4"	3/8"	1/4"	M16	
FP-95-M	156	6.15	140	5.52	150	5.91	125	4.92	20	0.79	13.0		3/8"	3/8"	N/A	-	
	Weight of Body				Weight of Piston				Total Weight								
	kg		lbs		kg		lbs		kg		lbs						
FP-50-M	1.750		3.858		1.500		3.307		3.300		7.165						
FP-60-M	2.100		4.629		2.150		4.740		4.250		9.369						
FP-95-M	4.500		9.921		4.900		10.802		9.460		20.723						

### IMPORTANT

**It is recommended that a 3/2 Pneumatic Valve is used in installation.**

Leaflet L1103 & L1104 available on request



Visit - [www.conspare.com](http://www.conspare.com) | Call +44 (0)1773 860796 | Email - [sales@conspare.com](mailto:sales@conspare.com)

ConSpare Limited Registered in England No. 10373473  
 Castlewood Business Park, Farmwell Lane, Sutton-in-Ashfield, Nottinghamshire. NG17 1BX.  
 We reserve the right to modify or withdraw specifications or products without notice or obligation.

