



# **Production of Concrete Pavers and Landscape Products**







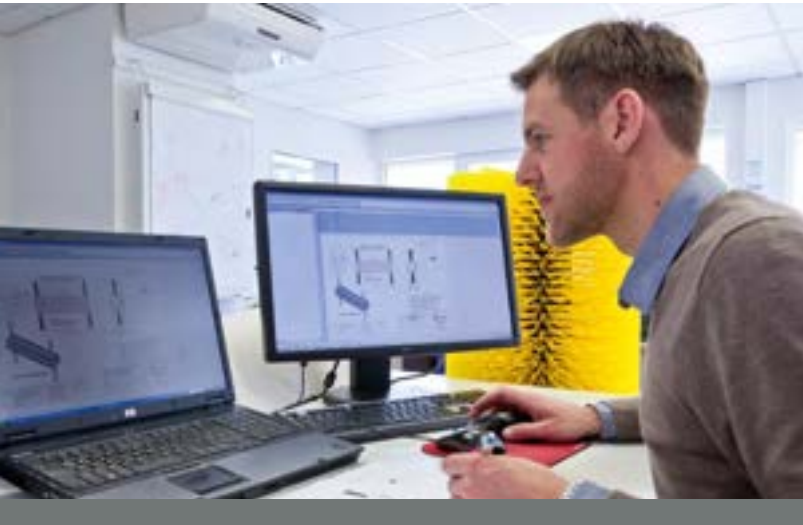


## In excellent shape!

We are intimately familiar with all types of surfaces. With a tradition going back for almost 120 years, a wealth of accumulated experience and remaining connected with the industry and its developments, Weber has become the leading supplier of brushes for the concrete products industry.

With our original steel back brushes, we set the benchmark in terms of performance and quality about 50 years ago; a standard which, to this day, has not been surpassed. Working closely with leading manufacturers of concrete product machines and concrete producers we have developed an array of products offering a solution to virtually every problem arising in the industry.

Established in 1894, „Weber Bürstensysteme“ today is a dynamic, growth oriented company with about 120 employees, family-owned and managed in the fourth generation. In Bad Camberg, our headquarters, we develop, manufacture and market high-quality brushes, be it for street cleaning sweeping and polishing, for agricultural uses to landscaping and the concrete products industry; products which meet the demands and expectations of our clients around the globe.



## Development

# Focusing on solutions!

Weber has been a reliable partner for the concrete products industry for more than 40 years. Being intimately familiar with the requirements for treating „green“ product, our brushes are precisely adjusted to the products manufactured as well as the materials and machines used. For each application we identify the appropriate solution: brushes that provide reliable and gentle cleaning without damaging the stones. A lot of our energy and material resources are devoted to developing new product and new solutions. The result of this: Brushes that make a difference in your operation!

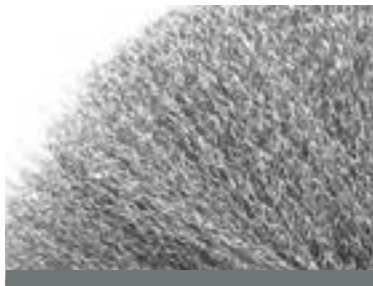
## Raw materials

# The ideal mixture!

High quality raw materials are the base for the quality and effectiveness of our brushes. For that reason we use certified suppliers only. Starting from this base we develop the the right “recipe“ ensuring that selection, combination and processing of materials are precisely adapted to your machines, your requirements and your specifications. A rigorous quality management system and quality checks carried out at strategic stages of the manufacturing process ensure that what you receive is first class.



**Plastic**



**Metal bristles**



**Roller body**

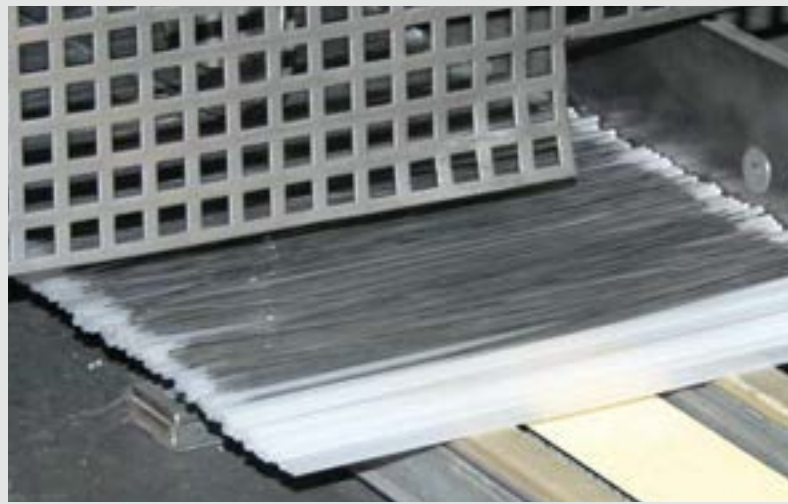




## Production

# Focusing on customer demand!

Our clients benefit from the high extend of our vertical integration and our well-attuned supply chain. Most of the components we use are manufactured in Germany, by suppliers we have been cooperating with for decades. Even at times of peak demand, everybody is working hand in hand, willing to go „the extra mile“. Thus, we are able to accommodate our clients' needs flexibly, on their schedule and on time.





# Feed drawer brushes

## Your benefits

- Thorough cleaning
- High stability
- Long service life
- Constantly high product quality
- High productivity, reduced amount of wastage

## The original

Nylon on the outside, metal wire on the inside, tightly connected to a galvanized steel profile back – a unique system and unsurpassed to this very day: The bristles are arranged more densely than in any other comparable brush. Safely seated in the steel back, they are never in danger of folding or falling out.

Weber feed drawer brushes have been designed to withstand the extreme stress occurring during the production process. Our special material mixture, high bristle density, special fixation process, unique number of bristle lines and high grade workmanship provide for a constantly high, pristine, product quality. We offer three different types of brush holders which are attached to the feed drawer.

### Brush holder types (from left):

Single

Double / parallel

V-shaped/ Chevron

# The unique Weber principle

**The  
original**  
Quality made by  
**Weber!**

**High bristle density** –  
special material mixture

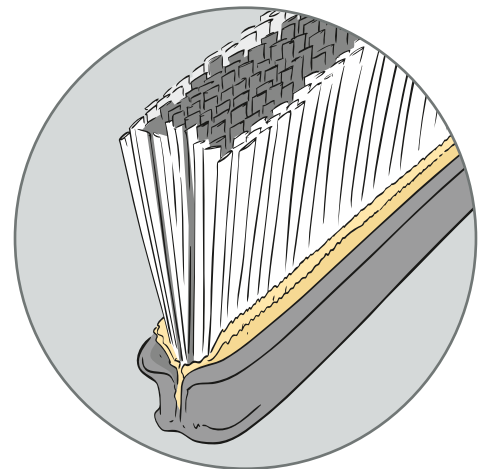
**Effective:**  
Nylon plus metal wire

**High stability:**  
Galvanized, sturdy  
steel profile

**Brush holders:**  
fast assembly, stable fit,  
correct pressure points

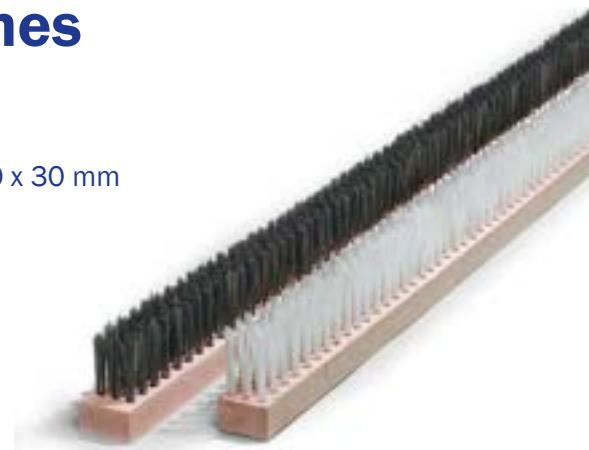
Nylon (outside): 1.0 or 2 x 3 mm  
Metal wire (inside): 1.1 x 0.25 mm  
Bristle length: 115 mm and 85 mm  
– other lengths on request

**Powerful double action:**  
The metal wires on the  
inside are protected and  
stabilized from the outside  
by abrasion-resistant  
nylon bristles. The result:  
effective shoe cleaning  
and extended service life.



## Wooden backed brushes The absolute classic

- Stable wood body in standard dimensions 30 x 30 mm and 50 x 30 mm – other sizes on request
- Individual material mixture:  
Metal wire, nylon or mixed
- Standard bristle length: 60 and 90 mm –  
other lengths on request





# Spiral brushes/ rotary brushes for green products

The spiral-shaped bristle arrangement causes a lateral sweeping motion, allowing even the lateral and rear edges or „burrs“ to be removed more easily. The loose spiral shape allows for the brush to be positioned closer to the board surface than what is possible with conventional bushes. As a result the bristles can penetrate the gaps between the stones more deeply without damaging the product.

## Your benefits:

- **Constantly high product quality**
- **More reliable „deburring“**
- **High productivity – reduced amount of wastage**

## Technical data:

- Pipe diameter: 45, 55, 65, 80, and 103 mm  
other pipe diameter on request
- Sweeping diameter: 150-500 mm
- Length: up to 2,500 mm
- Pitch: 20 mm (< 100 RPM) up to 50 mm  
(>100 RPM) and full body
- Material: high-quality nylon bristles  
or standard qualities such  
as polypropylene

## Cleaning brushes

Cleaning brushes are used to effectively clean bristle heads and the gaps between the bristle clusters, combing out concrete clumps or encrustations. The length of the brush carrier and of the bristles as well as the number of retaining brackets can be individually adapted for each rotary brush.



## Your benefits:

- **Thorough cleaning**
- **Long service life of rotary brushes**
- **Constantly high product quality**
- **Individual versions – precisely cut**





# Pallet/Production board sweeping brushes

Individually  
tailored  
to the pallet  
type!



## Your benefits

- Effective cleaning – brushes remove encrustations without damaging the pallets
- Precisely tailored solutions – bristles adapted to the pallet material
- Variable material mixture – plastic and/or metal wire, abrasive bristles

## Mould brushes

Weber manufactures top quality, custom-fit mould brushes for lateral shoe cleaning – for all type of standard and special curbs, including high, round, flat or flush curbs.

Custom-fit  
mould  
brushes –  
for any curb!

### Your benefits

- For all standard types of curbs (according to DIN EN 1340)
- Individual shapes and versions possible
- Variable material mixture: Nylon, metal wire or mixture
- Precise custom fit
- Impact-proof plastic body



# Brushes

## Application Questionnaire

### CONTACT

|                |              |
|----------------|--------------|
| Company        | Date         |
| Location       | Contact name |
| Address        | Tel no       |
|                | Mobile no    |
|                | Fax no       |
| E-mail address |              |

### APPLICATION

Brief description of application .....

.....

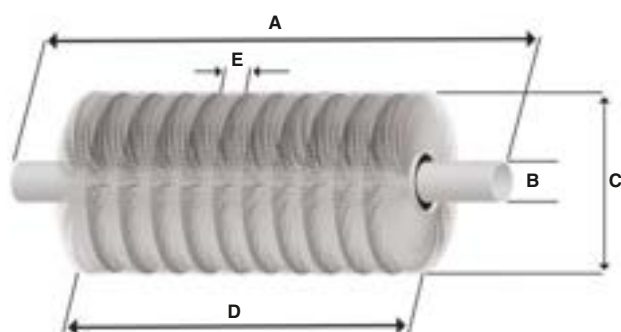
.....

.....

Please fill in relevant section:

☐ A. Spiral / Rotary    ☐ B. Segment / Ring    ☐ C. Strip    ☐ D. Wooden Backed

#### A. SPIRAL / ROTARY



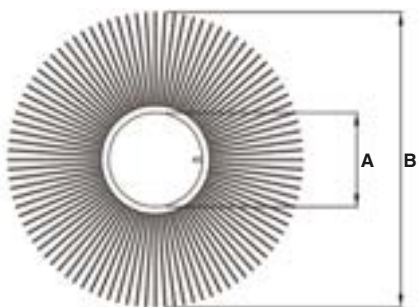
| Brush detail                               |                   | Qty:   |
|--|-------------------|--|
| A  | Pipe length       | mm   |
| B  | Pipe diameter     | mm   |
| C  | Sweeping diameter | mm   |
| D  | Brush length      | mm   |
|  | Bristle length    | mm   |
| <b>Bristle configuration (please tick)</b> |                   |  |
|  | Full bristle      | <input type="checkbox"/> Yes                 |
| E  | Spiral bristle    | <input type="checkbox"/> Yes If so, pitch mm |

#### Bristle type & thickness

|   |    |  |      |  |      |
|---|----|--|------|--|------|
| <input type="checkbox"/> Crimped wire:        | mm | <input type="checkbox"/> Nylon:              | mm   | <input type="checkbox"/> Nylon / crimped wire: | / mm |
| <input type="checkbox"/> Polypropylene (PPN): | mm | <input type="checkbox"/> PPN / crimped wire: | / mm | <input type="checkbox"/> Tynex:                | mm   |

Please turn over. Additional information required overleaf.

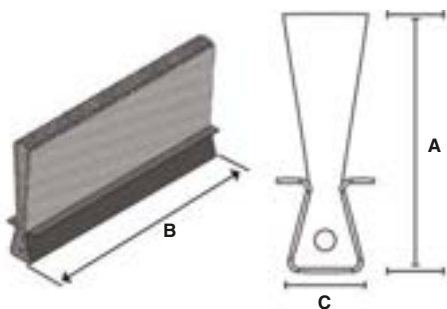


**B. SEGMENT / RING**

| Brush detail  |                     | Qty: |
|---------------|---------------------|------|
| A             | Ring inner diameter | mm   |
| B             | Outside diameter    | mm   |
| Spacer detail |                     | Qty: |
|               | Width of spacers    | mm   |

**Bristle type & thickness**

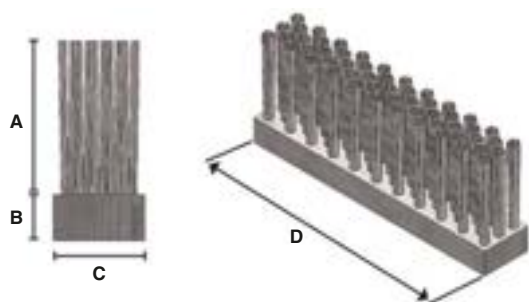
|   |    |  |      |  |      |
|---|----|--|------|--|------|
| <input type="checkbox"/> Crimped wire:        | mm | <input type="checkbox"/> Nylon:              | mm   | <input type="checkbox"/> Nylon / crimped wire: | / mm |
| <input type="checkbox"/> Polypropylene (PPN): | mm | <input type="checkbox"/> PPN / crimped wire: | / mm | <input type="checkbox"/> Tynex:                | mm   |

**C. STRIP**

| Brush detail |                | Qty: |
|--------------|----------------|------|
| A            | Overall height | mm   |
| B            | Length         | mm   |
| C            | Width          | mm   |

**Bristle type & thickness**

|   |    |  |      |  |      |
|---|----|--|------|--|------|
| <input type="checkbox"/> Crimped wire:        | mm | <input type="checkbox"/> Nylon:              | mm   | <input type="checkbox"/> Straight steel:       | mm   |
| <input type="checkbox"/> Polypropylene (PPN): | mm | <input type="checkbox"/> PPN / crimped wire: | / mm | <input type="checkbox"/> Nylon / crimped wire: | / mm |
|   |    |  |      | <input type="checkbox"/> Tynex:                | mm   |

**D. WOODEN BACKED**

| Brush detail |                | Qty: |
|--------------|----------------|------|
| A            | Bristle height | mm   |
| B            | Base height    | mm   |
| C            | Width          | mm   |
| D            | Length         | mm   |

**Bristle type & thickness**

|   |    |  |      |  |      |
|---|----|--|------|--|------|
| <input type="checkbox"/> Crimped wire:        | mm | <input type="checkbox"/> Nylon:              | mm   | <input type="checkbox"/> Straight steel:       | mm   |
| <input type="checkbox"/> Polypropylene (PPN): | mm | <input type="checkbox"/> PPN / crimped wire: | / mm | <input type="checkbox"/> Nylon / crimped wire: | / mm |
|   |    |  |      | <input type="checkbox"/> Tynex:                | mm   |

## Logistics

# Everything within reach!

Downtimes cause financial losses. To ensure that you keep operating, we keep our state-of-the-art logistics center stocked with all common types of brushes as well as spares and accessories. Simply give us a call and we will deliver the required product within short notice.

## Service

# Our mobile know-how at your disposal!

What may look like a completed order - for us it is only one single step. Delivery and qualified on-site service are important modules of our service program. In Germany and neighboring countries we run our own dedicated vehicles for free warehouse delivery. And on top of that, our trained service drivers are the extended arm of our sales organization, supporting you on all technical questions that you may have.



High availability –  
all standard brushes  
on stock

Short delivery times –  
even for special solutions

Trained service drivers

Highly flexible transportation –  
dedicated fleet of transport vehicles







## Clean solutions for industrial, municipal and agricultural applications

Whether it be for street cleaning, snow removal, pavement cleaning, livestock care or concrete product manufacture, Weber Bürstensysteme offers a broad range of technical brushes. Our proven standard solutions are complemented by customized systems for any and all cleaning applications that we develop in cooperation with machine and vehicle manufacturers.



**Street cleaning**



**Concrete  
products manufacture**



**Livestock care**



**Industrial  
and floor cleaning**



**Snow removal  
at airports**



**Pavement cleaning  
and landscaping**

**Weber Bürstensysteme GmbH are  
represented in UK by:**

# ConSpare

CONCRETE PRODUCTION EQUIPMENT

Castlewood Business Park, Farmwell Lane,  
Sutton-in-Ashfield, Nottinghamshire. NG17 1BX.

Call · 01773 860796 Email · [sales@conspare.com](mailto:sales@conspare.com)

**[www.conspare.com](http://www.conspare.com)**

