

DataSheet

Matrox Premium Polyethylene

Matrox Premium is an advanced engineering grade of Ultra High Molecular Weight Polyethylene (UHMWPE) with exceptional mechanical properties that make it ideal for solving material flow problems. It features extremely low surface friction which helps keep even the most stubborn raw materials flowing in bins, chutes, and hoppers.

Matrox Premium is the most advanced grade in our range and has been proven time and again to perform where other polyethylenes fail. Lubricating additives produce a Teflon like finish for the lowest coefficient of friction on the market. Lower friction reduces the effects of abrasion for longer wear life, allowing it to perform over the long term.



High-performance flow promotion

Exceptionally low surface friction

Excellent wear and impact resistance

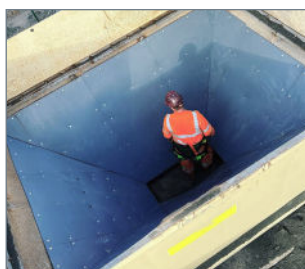
Resistant to UV, chemicals and oil

Range of sizes and thicknesses

Easy to handle and install

We offer sheets in two standard sizes of 2m x 1m and 3m x 1.25m, both of which are stocked in thicknesses of 10mm, 15mm and 20mm. We can also supply manufacturer-approved bolt kits and stainless steel edge capping profiles known as Z-bars, both of which help to achieve a successful installation over the long-term.

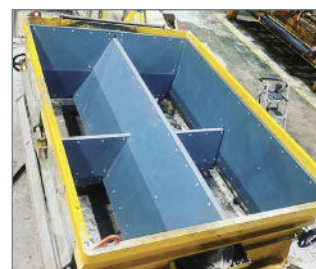
We believe that Matrox is the best lining material on the market, but we also stock a range of more economical PE1000 liners for less demanding applications. With both products however, it is critical to install them correctly. We have produced a manufacturer-approved installation guideline document which we recommend that you follow.



Ideal for bins, chutes & hoppers



Stainless steel edge capping
available



Simple to cut, form and fix

