

ConSpare

Make it better.

DataSheet

Solimar Aeration Fluidiser



Solimar Fluidisers are widely recognised as the most effective means of solving powder flow problems. The fluidiser principle was first developed by Solimar and is now accepted as one of the most efficient means of creating the uniform flow of dry bulk materials. A powerful combination of aeration, directional airflow and gentle vibration prevent bridging, ratholing and compacting.

Firstly, directional air flow is created as air is forced between chamber wall and product, creating a 360 'air-sweep', reducing friction and creating an 'avalanche' effect to get the product moving. Secondly, aeration loosens up the product allowing it to flow. Finally gentle vibration keeps the product flowing, preventing compaction or plugging.

Solimar Fluidisers create twice as much aeration action as many lookalikes. Solimar Fluidisers are used in 66 countries and have proven successful in solving flow problems with over 125 dry bulk materials, using the tried and tested Solimar technique.



More aeration action

Eliminates backflow & airline clogging

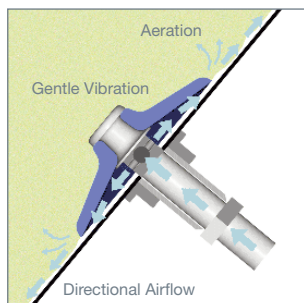
Less air, lower running costs

Fewer needed per vessel

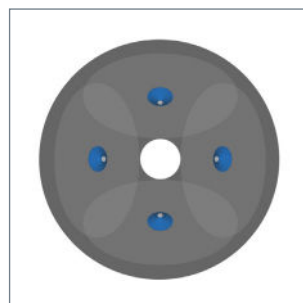
Trademarked radial ridge design

FDA approved food grade options available

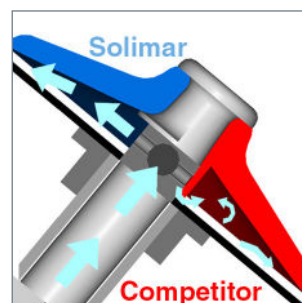
Mini disk option available



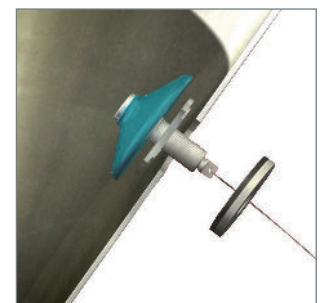
Solimar Fluidisers combine directional airflow, aeration and gentle vibration.



Overlapping air-sweeps make cone live.



Up to 130% more effective than designs which cover air distribution ports.



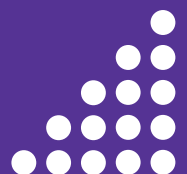
Fast-fit mounting kits allow installation and access from outside the silo.

Visit - www.conspare.com | Call +44 (0)1773 860796 | Email - sales@conspare.com

ConSpare Limited Registered in England No. 10373473
Castlewood Business Park, Farmwell Lane, Sutton-in-Ashfield, Nottinghamshire, NG17 1BX.

We reserve the right to modify or withdraw specifications or products without notice or obligation.

v042026-r1

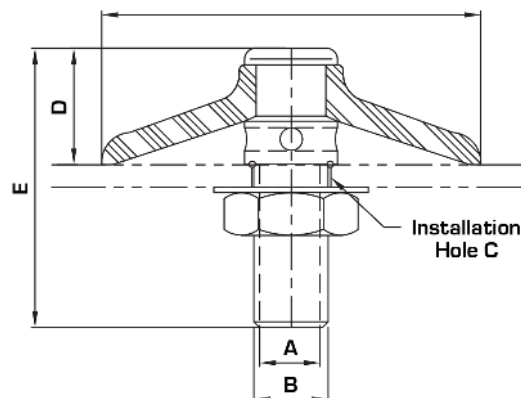


Technical Data

Series		Model	Disk	Stem	A	B	C	D	E	Airline Options	Airflow Requirements
4300	High Pressure Low Volume	4300	Blue	Mild Steel	1/4"	1/2"	22mm	30mm	76mm	10mm - 12mm	10 - 20 CFM @ 20 - 30 PSI 15 - 30 m3/h @ 1 - 2 bar
		4300 HT	Orange								
		4301	White								
		4323	Black EPDM	Aluminium							
		4302	Blue								
		4303	White	Stainless							
		* 4304	Blue								
		* 4305	White								
		* 4307 B	Black EPDM								
		* 4307 W	White EPDM								
		4305 HT	Orange								
* 4305 MD	Grey										
4400	High Pressure High Volume	4400	Blue	Mild Steel	1/2"	3/4"	27mm	32mm	78mm	13mm - 19mm	25 - 40 CFM @ 10 - 20 PSI 40 - 70 m3/h @ 0.7 - 1.5 bar
		4401	White								
		4407	Black EPDM								
		4402	Blue	Aluminium							
		4403	White								
		* 4404	Blue	Stainless							
		* 4405	White								
		* 4406	Black EPDM								
4405 HT	Orange										
4500	Low Pressure High Volume	4500	Blue	Mild Steel	3/4"	1"	35mm	32mm	83mm	19mm - 25mm	30 - 50 CFM @ 5 - 10 PSI 50 - 85 m3/h @ 0.3 - 0.7 bar
		4501	White								
		4502	Blue	Aluminium							
		4503	White								
		* 4504	Blue	Stainless							
		* 4505	White								
		4505 HT	Orange								
4800	Mini Disk	* 4804	Blue	Stainless	1/8"	N/A	13mm	14mm	38mm	6mm	2 - 3 CFM @ 20 - 30 PSI 3.5 - 5 m3/h @ 1 - 2 bar
		* 4805	White								

- Asterisk above denotes FDA approved food grade disks with stainless steel stems.
- White and blue disks are equivalent, both colours are offered due to demand from the food industry.
- Standard model blue or white disks have a maximum operating temperature 170°C.
- HT above denotes high temperature with a maximum operating temperature 230°C.
- MD above denotes FDA approved metal detectable disk.
- All disks are a silicone based material unless otherwise stated.
- 316 stainless stem options available on request.
- Special threadform works with both BSP and NPT threads.

**4" (100mm) Standard Fluidiser
2" (50mm) Mini Fluidiser**



Visit - www.conspare.com | Call +44 (0)1773 860796 | Email - sales@conspare.com

ConSpare Limited Registered in England No. 10373473
Castlewood Business Park, Farmwell Lane, Sutton-in-Ashfield, Nottinghamshire, NG17 1BX.
We reserve the right to modify or withdraw specifications or products without notice or obligation.

v042026-r1

